

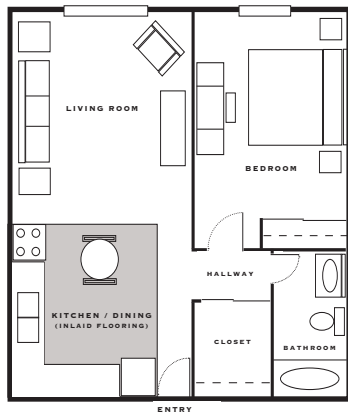
Residential Living

► *Apartment Styles and Features*

Residential Living provides some of the most well-equipped, senior apartment spaces in the Chippewa Valley. Choose from a variety of layouts and sizes. There are 1 and 2-bedroom units available. Each apartment contains all the comforts of home, with the added benefits of having emergency medical notification systems, fire-safety sprinkler systems, professional maintenance and nursing care available on-site, interior mailboxes and key-secured entry.

One Bedroom Units

(From 506 to 590 square feet)

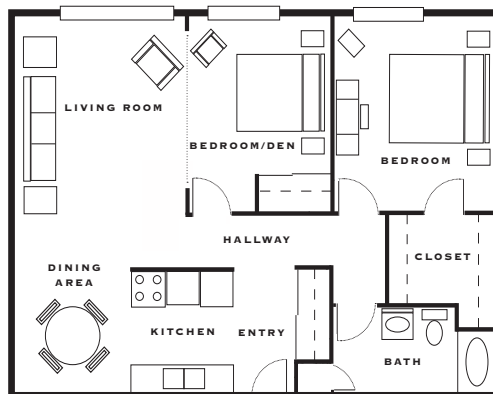


3-styles available

Starting at \$1,215/month

Two Bedroom Units

(From 854 square feet)



Various sizes available

Starting at \$1,560/month

Apartment Features

- All apartments include utilities, high-speed WiFi and cable TV service
- Private kitchen, dining, bedroom and barrier free bathroom
- Walk-in closets and pantry storage
- Individually controlled heating/cooling
- Full-size oven/stove and frost-free refrigerator/freezer units
- Sit-down or wheelchair accessible shower
- Drapery rods
- Spacious, easy to get around layouts
- 24/7 access to a RN via electronic alert system
- New flooring and cabinetry

► *On-site Amenities and Available Services*

- Full-time concierge available to help with scheduling, transportation, deliveries, answering questions or providing other assistance
- Three meals a day available as part of meal-plan services or choose to prepare and eat meals in your own apartment
- Restaurant-style dining room meal service or room-service delivery options
- Flexible and affordable housekeeping and laundry services available
- Health Link (personal wearable emergency alert) monitored by on-site health-care staff
- Rehabilitation therapy services (available in your apartment or our on-campus rehab facility)
- Grocery & pharmacy delivery services
- Assisted living services / help with cares of daily living (ability to flex on or off services - month to month as needed)
- Daily activities and life enrichment events on campus
- Large on-campus chapel with weekly services, Bible study groups, special events and activities
- On-site campus chaplain available to meet with you or to arrange communication with your personal clergy person
- Community and family event rooms, library, coffee-corner, patio and private paved walking paths circling the campus
- Convenience Store stocked with, milk, pop, bread, candy and other essential grocery and houseware items
- On-site beauty salon with professional cosmetologist available daily
- Large, raised-gardening beds for personal planting of vegetables or flowers
- Key-secured, building entry (with guest intercomm from entry to apartments)
- Interior mailbox access

► *Want More Information?*

Please call (715) 723-4437 or email info@chippewamanor.com

- *Monthly rates and service options valid as of 7.22*

